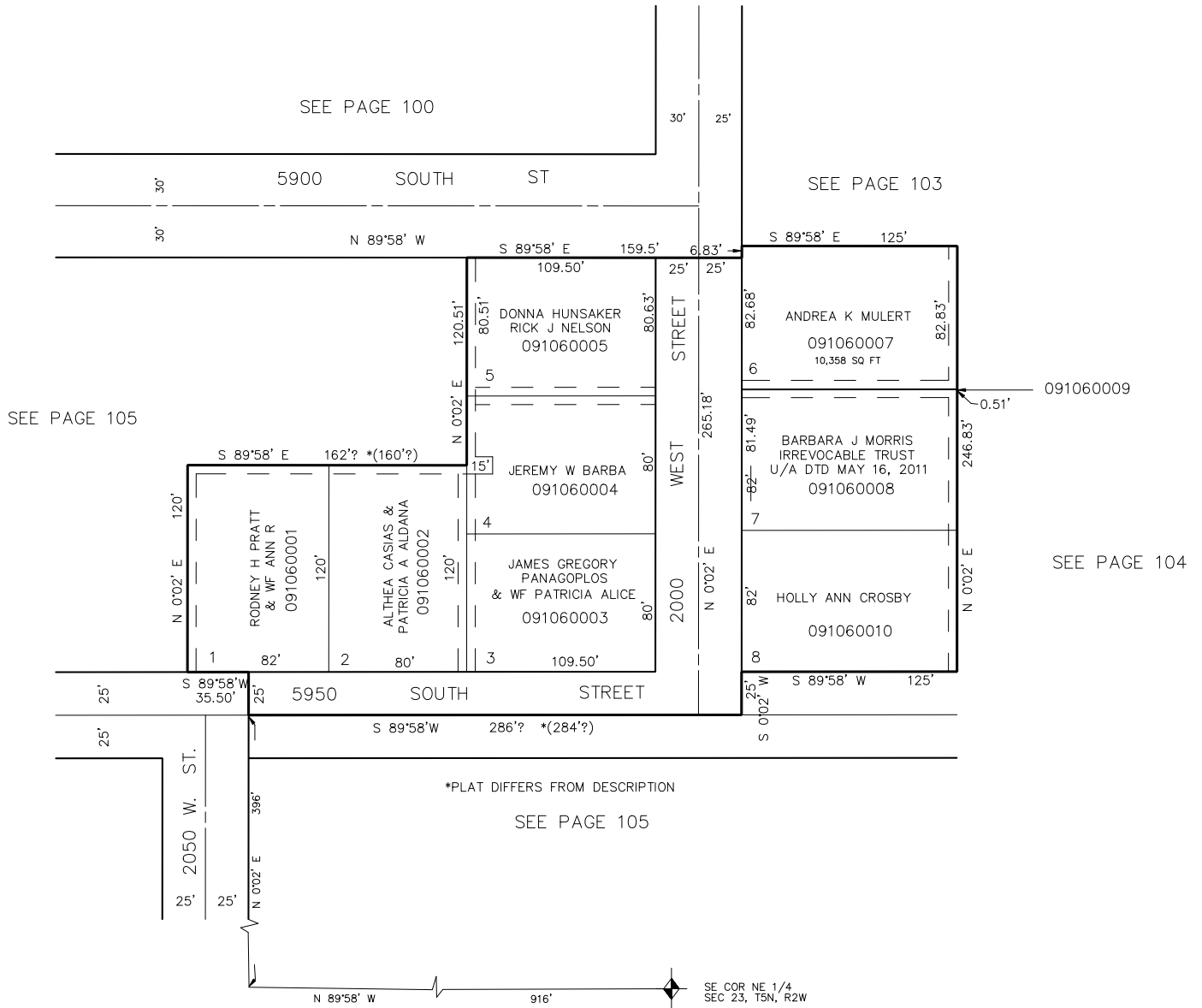


PART OF N.E. 1/4 OF SEC. 23, T.5N., R.2W., S.L.B. & M.
PURSER SUBDIVISION
 IN ROY CITY
 SCALE 1" = 50'

TAXING UNIT: 41



5' UTILITY & DRAINAGE EASEMENTS EACH
 SIDE OF PROPERTY LINES AS INDICATED
 BY DASHED LINES EXCEPT AS OTHERWISE
 SHOWN.

FOR COMPLETE ENG DATA SEE
 ORIGINAL DEDICATION PLAT IN
 BOOK 13, PAGE 19 OF RECORDS.